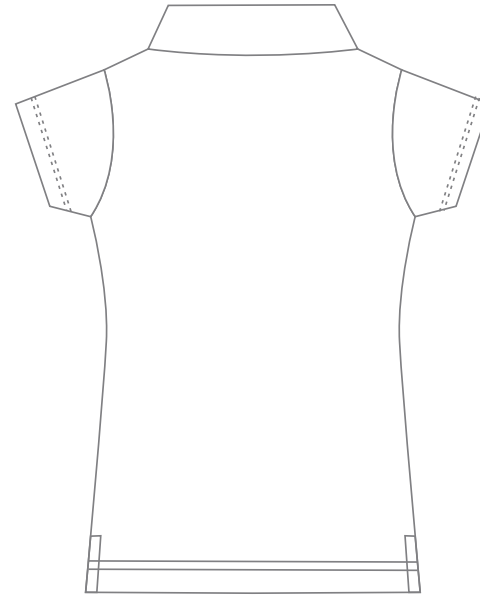


Front



Back

**STYLE INFORMATION:**

CATEGORY:  
**LADIES POLO  
(3 BUTTON)**

STYLE CODE:

GENDER:  
**WOMEN**

SIZE RANGE:  
**JUNIORS/ADULTS**

Available Sizes	0	2	4	6	8	10	12	14	16	18	20	22	24				
½ CHEST	-	-	40	42.5	45	47.5	50	52.5	55	57.5	60	62.5	65	-	-	-	-
BACK LENGTH	-	-	62	63	64	65	67	69	71	72	73	74	75	-	-	-	-

*Please note, the half chest measurement refers to the size of the garment, not the person wearing it.*

*To determine your half chest measurement, we recommend measuring a similar garment that you already own and that fits you well. Lay it smooth on a flat surface and measure from arm pit to arm pit across the chest. This is your half chest measurement. Use this to choose the appropriate size from the chart.*

*Tolerance +/- 1.5 cm*